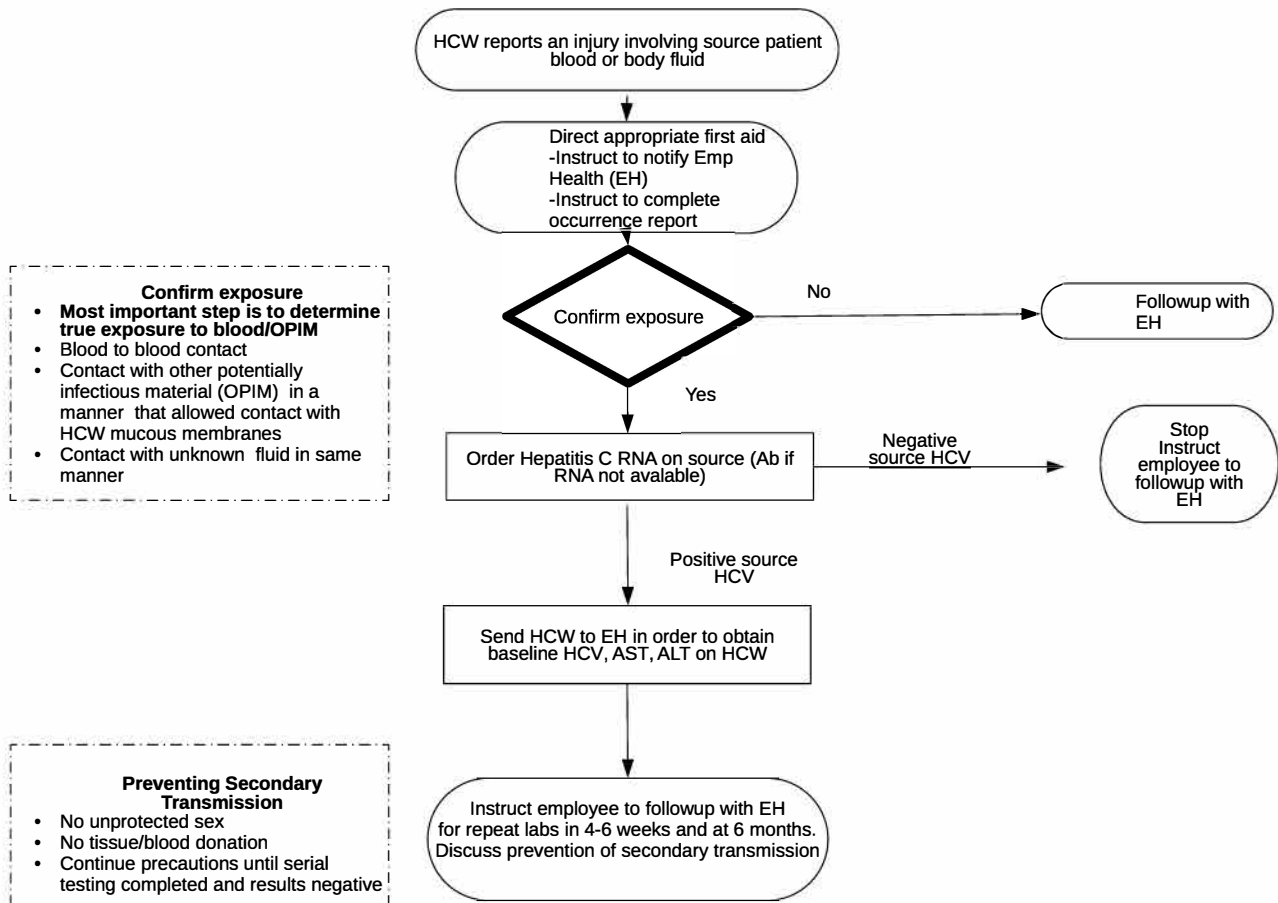


## Exposure: Hepatitis C



- Confirm exposure**
- **Most important step is to determine true exposure to blood/OPIM**
  - Blood to blood contact
  - Contact with other potentially infectious material (OPIM) in a manner that allowed contact with HCW mucous membranes
  - Contact with unknown fluid in same manner

- Preventing Secondary Transmission**
- No unprotected sex
  - No tissue/blood donation
  - Continue precautions until serial testing completed and results negative

- Additional Comments**
- Instruct HCW to report signs of fatigue, malaise, or viral syndrome during first 30 days post exposure
  - Consider Hepatitis C PCR if those symptoms reported.
  - Other post exposure testing might also be indicated, e.g., HIV